

Sustainable cities and communities

By 2030 Sustainable
Development Goal 11
seeks to make cities
inclusive, safe, and
resilient

What are the challenges
facing cities today?

How can cities be improved by 2030?

- Ensure access to adequate, safe and affordable **housing and services**
- Provide access to safe, affordable, accessible and sustainable **transport systems** for all
- Enhance inclusive, sustainable and **participatory urbanisation**
- Strengthen efforts to protect and safeguard the world's **cultural and natural heritage**
- Significantly reduce the number of deaths, number of people affected by, and **economic losses caused by disasters**
- Reduce the adverse per capita environmental impact of cities, particularly **air quality and waste management**
- Provide access to safe, inclusive, **green and public spaces**, especially for women, children, older persons and person with disabilities
- Strengthen **national and regional development** to create positive links with urban, pre-urban and rural areas
- Develop resource efficiency, and **adaptation to climate change**
- Help least developed countries to build sustainable **buildings with local materials**

In **2016** More than **50%** of the world's population lives in cities
According to the UN, nearly **70%** will live in cities by **2050**



Of the **3 billion** urban dwellers today, **1 billion** live below the poverty line



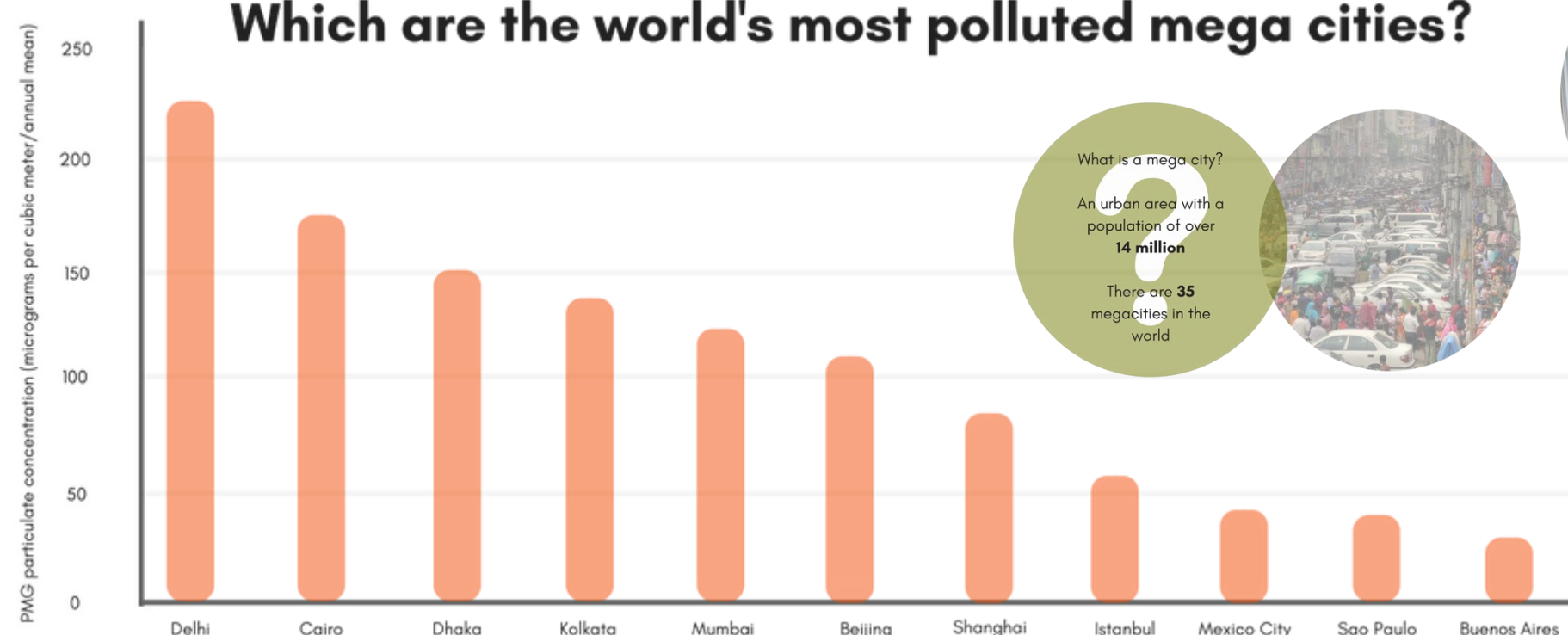
By **2035** it is estimated **5 billion** people will live in cities, with **2 billion** of them below the poverty line

The United Nations has designated **October 31** as **World Cities Day** to promote international interest in global urbanisation and co-operation

Formal employment has not increased with the rapid urbanisation of cities thus deepening social and economic inequality

75% of the world's cities have higher levels of income inequalities than two decades ago

Which are the world's most polluted mega cities?



What is a mega city?
An urban area with a population of over **14 million**
There are **35** megacities in the world



Increased population and migration to cities have created informal economies and communities in urban spaces

Globally, more than **900 million** people live in slums

In sub-Saharan African, **55%** of the total population live in slum-like conditions

Urban planning is less supported in the developing world

In the UK, there are **38** planners per **100,000** population, while in Nigeria the figure is **1.44**. It is **0.23** in India

Although cities occupy only **3%** of the world's land they account for around **60-80%** of energy consumption and **75%** of carbon emissions